



PRIGNITZ

Mikrosystemtechnik

Product Overview Pressure Transmitter



SPT Standard Pressure Transmitter

The pressure transmitter SPT is used to measure pressure in liquid or gaseous media, in the hydraulics, pneumatics, in machinery and equipment, as well as the process technology. The stainless steel membrane is completely vacuum-tight, extremely burst-proof and can be used with all standard media. High accuracy and robust and compact structure guarantees a broad range of possible applications.

	SPT-10	SPT-20
Output	4 ... 20 mA - 2 Cabel	0 ... 10 V
	4 ... 20 mA - 3 Cabel	0 ... 5 V
	0 ... 20 mA - 3 Cabel	0,5 ... 4,5 V
Supply Voltage *	14 ... 30 V DC	14 ... 30 V DC
		15 ... 27 V AC
Measuring Range	standard design device plug DIN EN 175301-803 BF C	
Pressure Connection *	1 ... 2000 bar final value	
Linearity Error	G 1/4" Form E (Standard)	
Process Temperature	+/- 0,5 % FS	
Protection Class	- 20 °C ... + 85 °C	
	widen: - 40 °C ... + 105 °C	
	IP 65	



PT-MH1 Pressure Transmitter Mobile Hydraulics

The pressure transmitter is inserted in the mobile hydraulics, like making, land and day building machines, as well as for transmission and engine technology.

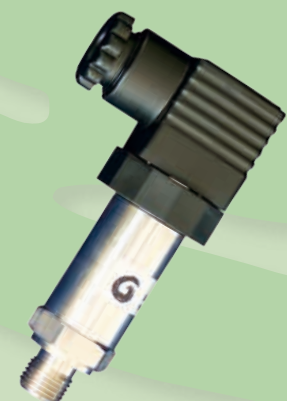
Measuring Range	1 ... 2000 bar final value
Pressure Connection *	G 1/4" Form E (Standard)
Output	4 ... 20 mA - 2 Cabel
	0 ... 10 V
	1 ... 5 V
	0,5 ... 4,5 V
Electr. Connection	Cabel, AMP, Deutsch connectio with cabel
Linearity Error	+/- 0,5 % FS
Process Temperature	- 40 °C ... + 140 °C
Protection Class	IP 65
Significance	Load-Dump-Protection
	EMV - stability to 300 V/m



PT-EXi Pressure Transmitter Intrinsically Safe

The pressure transmitter is used in the industrial area in explosion endangered surroundings.

Measuring Range	1 ... 2000 bar final value
Pressure Connection *	G 1/4" Form E (Standard)
Output	4 ... 20 mA - 2 Cabel
Electr. Connection	on request
Linearity Error	+/- 0,5 % FS
Process Temperature	- 40 °C ... + 85 °C
Protection Class	IP 65
Ex-approval	II 2G EEx ia IIC T4 (IBExU 04 ATEX 1182)



SIT Standard Pressure Transmitter

The SIT is pressure transmitter for the measurement of pressure in gaseous or liquid media, in the hydraulics, pneumatics, in machinery and equipment, as well as the process technology. The stainless steel membrane is completely vacuum-tight, extremely burst-proof and can be used with all standard media.

By resetting the sensors after the installation will offset error compensated.

High accuracy and robust and compact structure guarantees a broad range of possible applications.

	SIT-10	SIT-20
Output	4 ... 20 mA - 2 Cabel	0 ... 10 V
Supply Voltage	14 ... 30 V DC	
	standard design device plug DIN EN 175301-803 BF C	
Output digital	optional	
Measuring Range */***	1 ... 2000 bar final value	
Pressure Connection *	G 1/4" Form E (Standard)	
Linearity Error	+/- 0,5 % FS	
Process Temperature	- 40 °C ... + 85 °C	
Protection Class	IP 65	



PT-MH2 Pressure Transmitter Mobile Hydraulics

These pressure transmitters are used particularly in the transport and making machine technology.

Measuring Range	1 ... 2000 bar final value
Pressure Connection *	G 1/4" Form E (Standard)
Output	PWM, variable Frequenz Mixed Signal ASIC
Electr. Connection	Deutschstecker
Linearity Error	+/- 0,5 % FS
Process Temperature	- 40 °C ... + 140 °C
Protection Class	IP 65
Significance	Load-Dump-Protection EMV - stability to 300 V/m shock resistance 1000g



PT-LM Level Probe

The level probe PT-LM is designated for level measurement in basins, tanks, or cisterns. The PUR-cable connected to probe provides a capillary tube for relative pressure balancing.

Measuring Range	> 1m water column
Pressure Connection *	Metal Binder or weighted plastic protection
Output	4 ... 20 mA - 2 Cabel 4 ... 20 mA - 3 Cabel 0 ... 10 V 1 ... 5 V
Electr. Connection	Cabel - Length on request
Linearity Error	+/- 0,5 % FS
Process Temperature	+ 5 °C ... + 70 °C
Protection Class	IP 65



DPM-01 Network undepend Pressure Gauges

The transmitters will measure pressures in air, liquids and oils in pneumatics and process technology. A resetting after installation compensates offset error. The grid design allows use in the field.

In the operating mode 1 is a continuous display of the measured value, which in a defined time frame is updated.

In the operating mode 2 is the measurement of a button with a sampling rate of 10 PLC. After a set time, the system is in sleep mode.

Measuring Range	0 ... 1 bar 0 ... 2000 bar
Supply Voltage	internal 3,6 V 1200 mAh z.B. TEKCELL SB-AA02
Linearity Error	+/- 0,5 % FS
Total Error	+/- 1,0 % FS
Display	4-digit LCD
Process Connection	G 1/4" Form E (Standard)
Process Temperature	- 20 °C ... + 70 °C
Ambient Temperature	- 20 °C ... + 50 °C
Protection Class	IP 65
Operating mode 1	constant display with measurement all 1 ... 100 s (0,1 s committee-time per measurement)
Operating mode 2	display for 10 ... 1000 s committee-time after button-pressure
Battery Life	1,3 Mio. Aktiv-Seconds
Housing (BxTxH)	100 x 67 x 45 mm (without Pressure Connection)



* others on request • ** possible calibration 0 ... +x; -x ... +x; -x ... 0 • *** other possible characteristic curves: inverse output signal or root-function • FS - Full Scale

Contact



Margarethenstraße 61
19322 Wittenberge (Prignitz)
Germany

*This enterprise is
certified after
DIN EN ISO 9001*

Phone: +49 3877 - 56 39 33
Fax: +49 3877 - 56 40 74

Email: info@prignitz-mst.de
www.prignitz-mst.de